



**Mission Canyon Association - MINUTES - 2/6/24, 7:30 p.m.
by Darby Feldwinn**

1. Call to order & introductions (Jason Saltoun-Ebin)
 - 1.1. Board Members Present: Alex Feldwinn, Darby Feldwinn, Jason Saltoun-Ebin, Hugh Twibell, Gustavo Agredano, Hutch Axilrod, Kevin Snow, Nancy Weiss
 - 1.2. Board Members Absent: Jason Jewel, Jean Yamamura, and Selden Edner
 - 1.3. Guests: Ray Pok (SCE), Janet Vanrenterghem, Ray Smith, Steve Windhager, Kadie McShirley, Amy Carpenter
2. Minutes of December Meeting Approval (note: no meeting in January)
 - 1st: Hugh Twibell
 - 2nd: Hutch Axilrod
 - All approved
3. County Update: Supervisor Das Williams/Kadie McShirley
 - Minimal damage from the storms across the County
 - There is going to be a celebration on the finishing of the sewer project in the first or second week of march.
 - Meet with Mission Canyon Heights people that are concerned about the number of wires that are on the poles (some of which may be unused or used for the Modoc substation repairs that are being done). Das would like to work with SCE and others to find out how to harden the wires.
4. Museum of Natural History Update: Amy Carpenter
 - They lost an oak tree in the parking lot and it took out the brand new parking light.
 - The annual meeting will be on May 7th at the museum.
5. Botanic Garden Update: Steve Windhager
 - There was flooding of Mission Creek that went viral
 - The flooding last year caused a lot of damage but this year there was almost no lasting damage.
 - No significant trees were lost in the storm
 - The SBBG hired Fehr and Peers (fehrandpeers.com) for a traffic study. They are going to kick off the study 2-4:30, Feb 24th to walk around the site and identify the corners and issues for the consultant to think about as they do their study. Invitations will go out later this week.
6. Treasurer's report (if needed): Selden Edner

MCA Financial Condition as of 1-31-24

Montecito Bank and Trust checking 12-31-23	\$31,708.44	
Deposits		
Interest	1.13	
SB County port-a-potty cost share	\$1,789.90	

Sub-Total	\$33,499.47	
Less expenses	\$459.21	

Sub-total	\$33,040.26	
Move to new CD MB&T 1-3-24	(\$20,000.00)	

1-31-24 total	\$13,040.26	\$13,040.26
MB&T CD #1 10/5/23		
7-month Flex CD matures 5-5-24 4.29% APR	\$20,000.00	
accrued interest (Nov + Dec)	\$212.84	
1-31-24 balance	\$20,212.84	\$20,212.84
MB&T CD #2 dated 1-3-24		
7 month Flex CD matures 8-3-24 4.29% APR	\$20,000.00	\$20,000.00
Total Funds 12-31-23		\$53,253.10
Balance from 12-31-23	\$51,849.31	
Balance on 1-31-24	\$53,253.10	
Net change 12-31-23 to 1-31-24: increase	\$1,403.79	

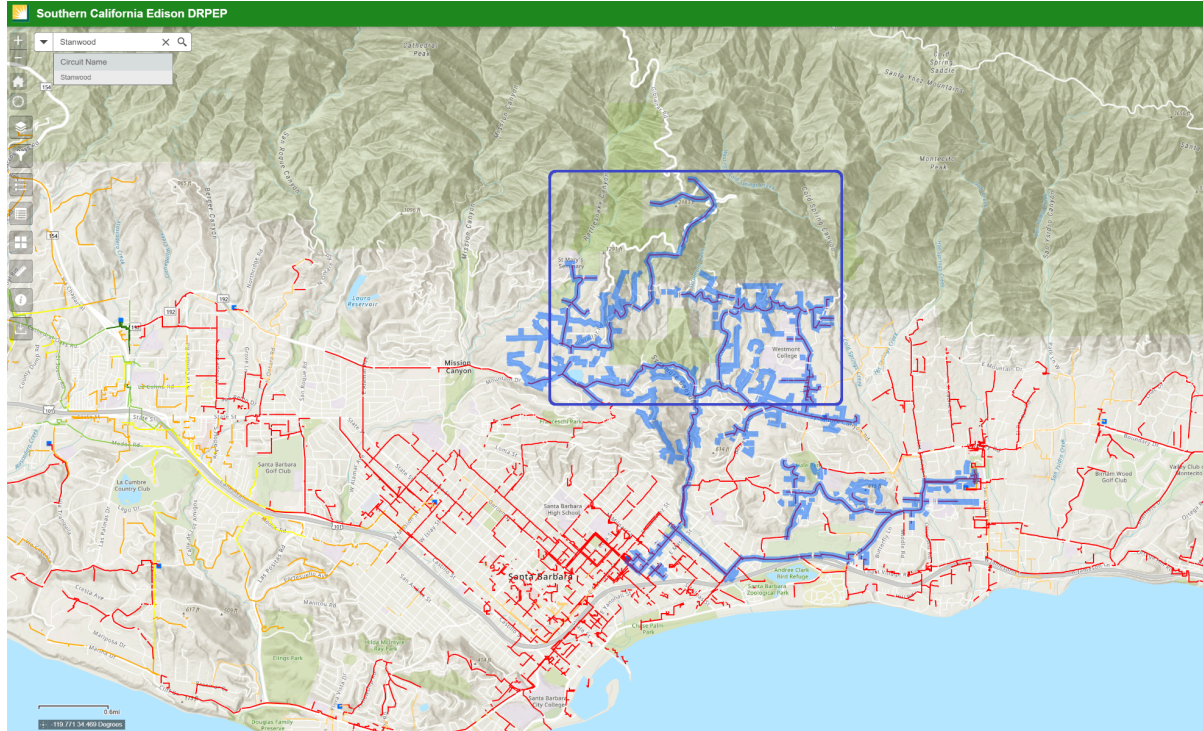
7. New Business

7.1. SCE Undergrounding of wires (proposed for 2026)

2026-2027 is when they are anticipating to do the undergrounding project.

- There are two other projects in SB, one in downtown and Modoc substation (cutover project). They are going to eliminate the modoc substation and then reroute them to another station. As part of this they had to put in some temporary wires which will come down when the project is done.
- They are starting a targeted undergrounding project (TUG). These projects help with wildfire mitigation.
- There are a lot of different tools that they are trying to use to make sure that the electrical lines do not start fires which include covered conductors, fire resistant poles, protective devices, and targeted undergrounding.
- To determine what mitigation they do they start with a risk assessment and then do feasibility studies and then carry out the projects.

- For undergrounding, two things they look at are the egress in the areas (smaller the egress more likely to underground) and the wind (the more wind the more likely to underground).
- Currently they are looking to underground cabling in an area adjacent to Mission Canyon.



-

- Even when they underground the electrical wire the poles stay up because other utilities are using them.



TARGETED UNDERGROUNDING IN HIGH FIRE RISK AREAS

UNDERSTANDING THE FACTS

Faced with the ongoing threat of more frequent and catastrophic wildfires, California needs more resilient infrastructure. Southern California Edison continues to strengthen its electric grid, using innovative tools, technologies, and practices to further protect customers and communities from the ongoing risks of wildfires. More than 40% of the primary distribution lines in SCE's high fire risk areas are undergrounded. To further reduce wildfire risk cost-effectively and expeditiously, SCE continues to replace bare wire with covered conductor (coated wire). By the end of 2025, SCE expects to have replaced more than 7,200 miles of overhead distribution power lines in high fire risk areas with covered conductor.

TARGETED UNDERGROUNDING AS A WILDFIRE MITIGATION MEASURE

Underground systems can help reduce the risk of wildfires and increase reliability during high winds and storms by reducing the exposure of electrical infrastructure to extreme weather conditions. We are identifying the highest risk power lines to underground. Customers will continue to see other equipment overhead, including telecommunication lines.

SCE has identified a subset of high fire risk areas as "Severe Risk Areas" where we have determined that for public safety reasons it is prudent to significantly reduce ignition risk by undergrounding, if not already hardened with covered conductor.

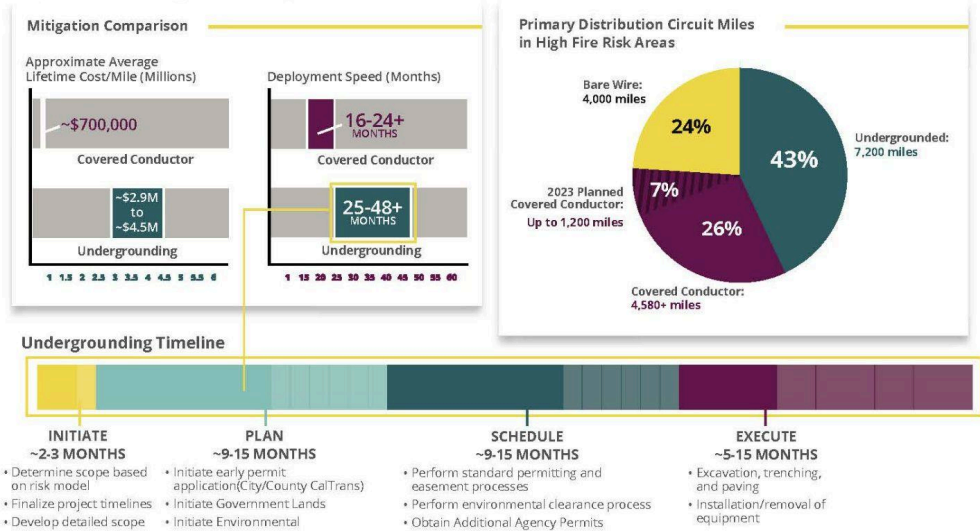
Targeting underground criteria include:

- limited exit and entry points to communities
- high burn frequency
- high wind speeds exceeding covered conductor Public Safety Power Shutoff thresholds
- exceptionally high potential consequence (could burn > 10,000 acres within 8 hours)
- communities of elevated concern
- operational feasibility

TARGETED UNDERGROUNDING REQUIRES EXTENSIVE PLANNING AND EARLY COMMUNITY ENGAGEMENT

Undergrounding power lines take much longer to construct, are more costly, and are more difficult to maintain and repair than overhead infrastructure, particularly in mountainous and rocky terrain.

Typically, targeted undergrounding can take two to four years, and possibly longer, whereas covered conductor can be installed in less than two years. SCE will work closely with local cities and counties and engage impacted customers early in the process, especially concerning easement acquisition.



Updated: 3/27/2023

8. Committee Reports

8.1. Mission Canyon Brush Cleanup and Chipping:

- N/A

8.2. Newsletter: Jean Yamamura

- N/A

- 8.3. Architectural Design Review: Hugh Twibell
- **Project Description** - The proposed project is a 250 unit multi-family residential development that includes 50 low income units and is being submitted as a Builder's Remedy project under SB330. The proposed project is a new multilevel building to be constructed with covered parking below the residential units. The proposed project will have approximately 230,000 square feet of residential living space and a total of approximately 440,000 square feet of construction including the living spaces, along with lobbies, hallways, mechanical space, garages and other residential accessory construction. Grading and excavation will be performed for the construction of the proposed project.
 - They are looking at developing the seminary property into a fairly substation housing complex (250 units). We need to keep an eye on this project because this is problematic because of the additional people in the canyon that would need to be evacuated in case of a fire.
- 8.4. Parking & Traffic: Jason Saltoun-Ebin
- N/A
- 8.5. Land Use Committee: Kevin Snow
- N/A
- 8.6. Membership:
- N/A
- 8.7. Fire Committee: Ray Smith and Selden Edner
- Brand new FireWise community. This is the 3rd FireWise community thanks to Hutch (Arriba Way)
 - Montrose Place submitted their application (will be 4th community)
 - Palomino Road is close behind and will hopefully be the fifth one soon
 - They are working on evacuation workshops, this was based on suggestions from the FireWise communities.
 - Worried about some properties in Mission Canyon Heights because some of these houses have lots of plants close to structures, plants that are highly flammable (ex: bamboo, pine, etc), and dead plant material on the ground.
- 8.8. Website: Alex Feldwinn
- N/A
- 8.9. Tunnel Trail Working Group: Nancy Weiss and Selden Edner
- SCE has just released their creek clean up plan. This has a 30-day clock for comments.
- 8.10. MHTA/Historic Bridge Update:
- N/A

Next Board Meeting: 7:30 pm on March 05, 2024, via Zoom